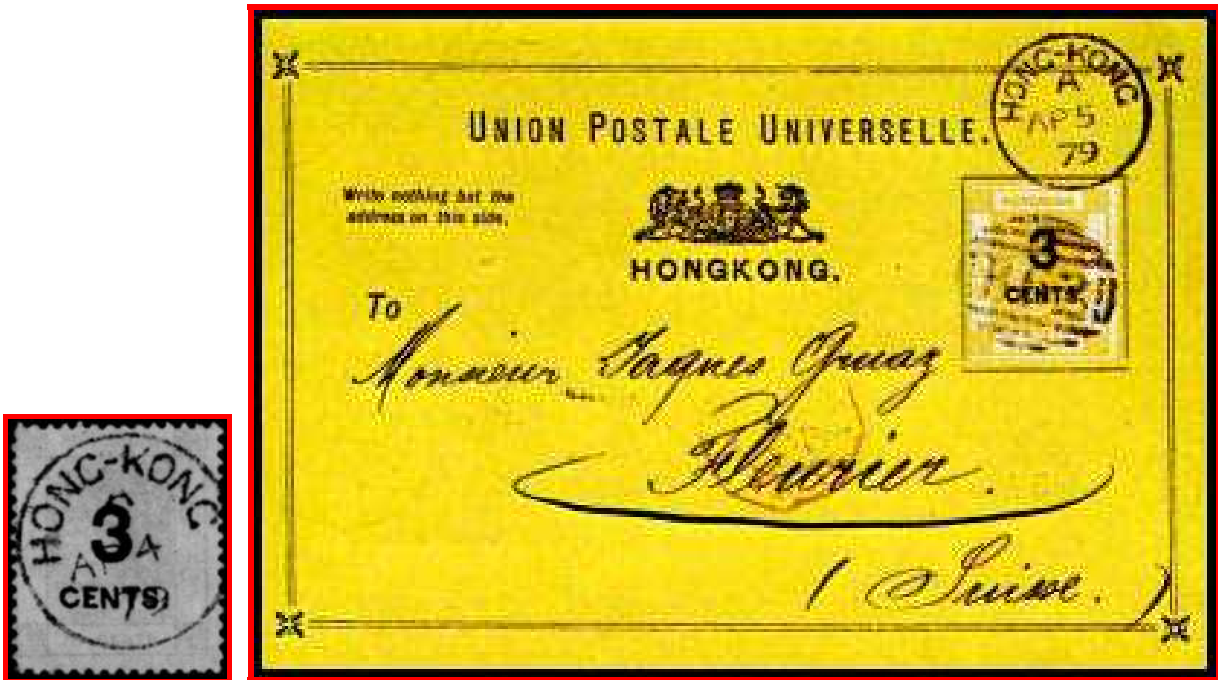
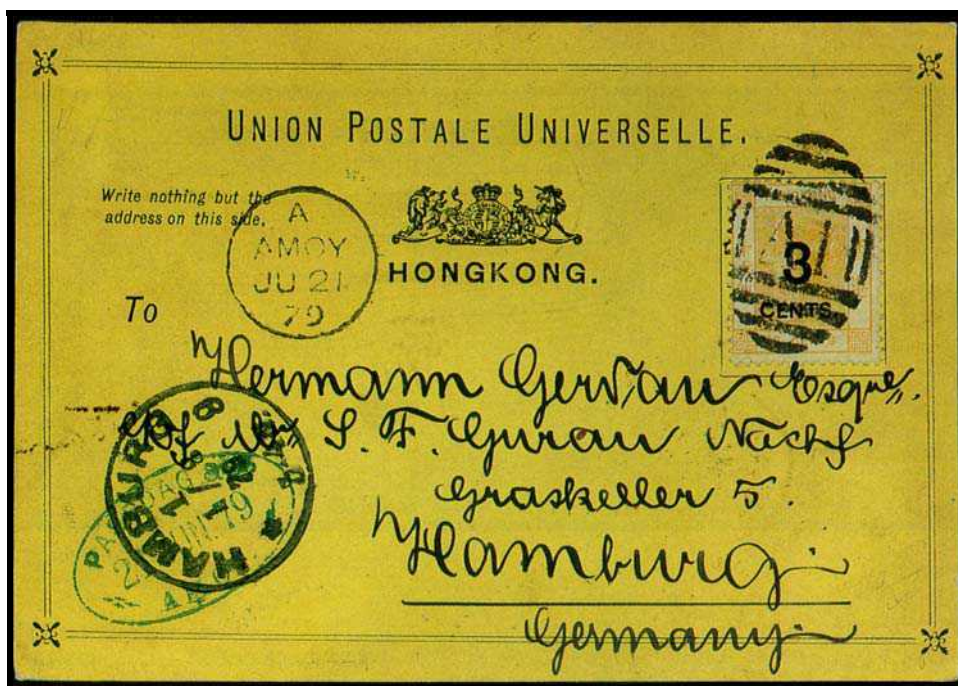


1879	Webb: P1 Sch.: I-la	3c / 16c, with or without short "T" Yellow card Earliest Recorded Use in Hong Kong (4.4.1879) [Earliest use on off-card 3c / 16c stamp] (5.4.1879) [Earliest Verified Use of All Post Cards]
------	------------------------	---



1879	Webb: P1 Sch.: I-la	3c / 16c, with or without short "T" Yellow card Earliest Recorded Use in Amoy (21.6.1879)
------	------------------------	---





You must be logged in as a member of Hong Kong Study Circle to view the rest of this document